

## Dramm Autofog Annual Maintenance Kit - AF-AMK

Thank you for purchasing an annual maintenance kit for your Autofog. It is important to maintain certain components on your Autofog annually, even without evidence of wear. Replacing these parts on a yearly basis will keep your Autofog running properly with little other maintenance required.

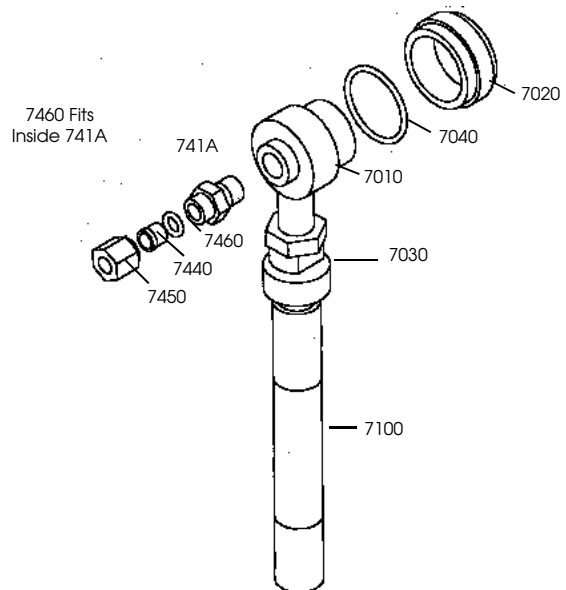
The Annual Maintenance Kit includes:

- 1 - 7400 Suction Tube
- 1 - 7040 O-Ring for the nozzle
- 1 - 741A Solution Line Connector Assembly
- 1 - 10388 Suction Line Strainer
- 1 - 641010 Air Filter for the compressor

The majority of these parts are for use in the nozzle and solution portion of the machine.

To replace these parts, remove the nozzle from the Autofog and disconnect the airline.

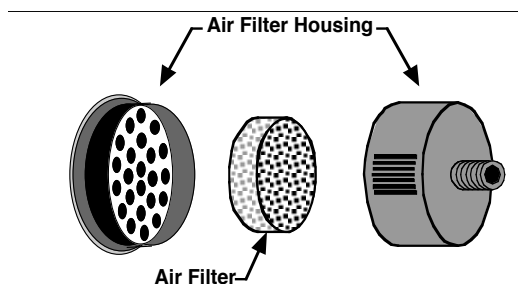
1. Loosen the solution line retaining cap (part 7450).
2. Pull the old solution line out of the Solution Line Connector Assembly (part 741A).
3. Remove the entire Solution Line Connector Assembly by unthreading it from the nozzle base.
4. Replace this with the new Solution Line Connector Assembly.
5. Loosen the solution line retaining cap on the new assembly.
6. Insert the new solution line into the assembly.
7. Tighten the retaining cap.
8. Remove the nozzle cap (part 7020).
9. Remove the O-Ring (part 7040) from the nozzle cap using a sharp object.
10. Clean the nozzle cap with warm water and a mild detergent.
11. Insert the new O-Ring into the nozzle cap.
12. Replace the nozzle cap, tighten to finger-tight and turn BACK so that the red markings line up. This is FACTORY calibrated. Once the parts have been replaced, you will need to calibrate the nozzle to account for any wear over the past year. (instructions on reverse)



Once your nozzle is reassembled, replace it on the machine and reconnect the airline.

Remove the air filter cover. Depending on the age of your Autofog, this may be underneath the red cover or it may be on the outside of the cover.

Replace the filter and discard the old filter. This filter has been in contact with pesticides in the air during application and should be treated as such.

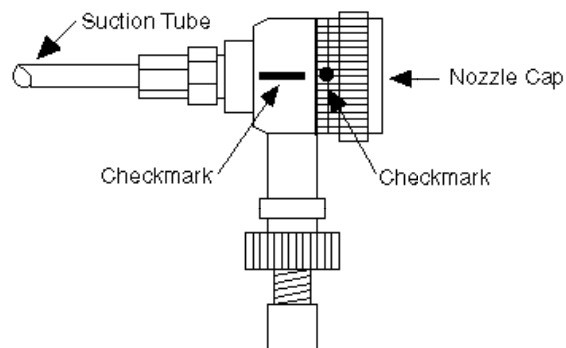


## Calibration

The Dramm Autofog has a re-calibratable nozzle. If properly maintained, it should last for years by simply adjusting the nozzle for wear.

To calibrate your nozzle, start at the **FACTORY** Calibration of finger-tight turned back so the red marks line up

OR



Start at the most recent calibration point you have set.

**For best results, your Autofog should output 45 ml/minute for the MLVH or SLVH or 55 ml/minute for the LVH.**

1. Fill a graduated cylinder with 90 ml for the MLVH and SLVH or 110 ml for the LVH.
2. Start the compressor.
3. Insert the solution line into the cylinder. The nozzle should spray.
4. Spray for 2 minutes. The cylinder should be empty. If not, **SLIGHTLY TIGHTEN** the nozzle cap (between 1-4 grooves). Repeat the test until the nozzle outputs the water in 2 minutes.
5. You may wish to use a permanent marker to mark your new calibrated nozzle cap position.